

[Type here]



## **ANGLIA MOTOR SPORT CLUB & GREEN BELT MOTOR CLUB**

**DEBDEN AUTOSOLO  
AUTOTEST AND PRODUCTION CAR AUTOTEST  
DEBDEN AIRFIELD, NR SAFFRON WALDEN**

**SUNDAY 27TH OCTOBER 2024**

# **SAFETY MANUAL**

## **Contents**

Contents.....	2
Introduction .....	3
Health and Safety Policy .....	3
Contacts.....	3
Radio .....	4
Paddock Area Guidelines .....	4
Entry into the venue .....	5
Venue overall site plan.....	5
Medical .....	6
Incident Procedure.....	6
Safeguarding.....	7
Hospital details.....	7
Hospital location and route .....	7
Hospital Site Plan .....	8
Risk Assessments.....	8

## **Introduction**

The Debden Autosolo/Autotest/Production Car Autotest is organised by Anglia Motor Sport Club, with the support of Green Belt Motor Club, in accordance with the regulations of Motorsport UK issued by Motorsport UK.

The Management and Organising Team are focused on the safety of competitors, marshals, and officials of the event.

This Safety and Operations Manual will provide guidance for Officials, Marshals and Competitors for the organisation and running of the event and the safe participation of all those involved.

## **Health and Safety Policy**

The organising club takes safety of all at the event very seriously. The safety of competitors, organisers and marshals is taken into consideration in the event planning and it is believed that all foreseeable precautions to ensure the safe running of the event have been taken. However the nature of motorsport is such that the unexpected can and does happen.

The club asks that every person participating in the event whether competitor, official, marshal or spectator follow these rules and guidelines and take all reasonable care for the health and safety of themselves and others who may be affected by his/her acts or omissions during the running of the event. The event will be run and managed in accordance with the regulations included in the Motorsport UK Yearbook. These should therefore be assumed as a minimum level where relating to safety matters.

The Clerk of the Course (CofC) is the person responsible for health and safety. However we should all provide support by understanding and accepting our own responsibilities.

### **BE AWARE!**

- **Cars move unexpectedly and may slide excessively, especially if it rains.**
- **Drivers may have difficulty bringing the car to a halt even at low speed.**
- **Cars may not travel in any particular direction.**
- **Cars and Drivers may do what you least expected.**

## **Contacts**

John Davie	Clerk of the Course	07894 642854
Chris Deal	Secretary of the Meeting	07920 840689
Dave Saint	Chief Marshal	07783 981605
Richard Candy	Scrutineer	
Stuart Kingham	Event Steward	07710 040918
Hilary Warne	Safeguarding Officer	07951 971377

## **Radio**

There will be radios used on the event. These will be on the Open 'colour' channels licenced for use with Ofcom by GBMC. These will be located as follows and will be on the following channels.

<b>AREA</b>	<b>LOCATION</b>	<b>OPEN CHANNEL</b>	<b>Common Radio Channel Number</b>
Test Area 1	Start/Finish and in Test	Red (86.3750)	Channel 5
Test Area 2	Start/Finish and in Test	Blue (86.3625)	Channel 6
Test Area 3	Start/Finish and in Test	Orange (86.3500)	Channel 7
Test Area 4	Start/Finish and in Test	Green (86.3375)	Channel 8
Clerk of the Course/Secretary/Chief Marshal/Event HQ		Yellow (77.6875)	Channel 9

In case of an incident that requires attention from outside the Test, initially contact the CoC or Chief marshal by switching to Channel 9.

In the event that this is not picked up directly it should be directed to the HQ who will pass on the message.

Use of the mobile phone is an alternative option.

If the issue is safety or incident related ensure that this is highlighted at the commencement of the message.

## **Paddock Area Guidelines**

While it is not anticipated that significant servicing will be required the following notes are offered as guidance for working within the paddock area. Competitors and any support crew should be aware of their own and other people's safety and well being if working on their vehicles.

- No refuelling allowed due to the risk of spillage during the process.
- No working under a vehicle unless properly supported on axle stands, ramps or a car trailer.
- If a spillage of oil or other fluid occurs a spill kit (either the competitors own or the organisers available at Event HQ) must be used to clear up the spill. The CoC/Event HQ must also be informed. Remediation is the competitors responsibility.
- Fire extinguishers are available at each test start and at the results trailer.
- First Aid kit available at the results trailer.
- Tyres should only be re-inflated with portable 12 volt compressors or foot pumps 7  
Take care when lifting vehicle parts, including wheels. Avoid contact with moving parts.
- Other than at noise check, engines should be turned off for Scrutineering.
- Consider the use of suitable PPE if you are likely to come into contact with hot parts 10  
Please limit speed in the paddock area to 5mph

## Entry into the venue

Debden airfield (Carver Barracks) is located on Water Lane, South East of Saffron Walden, Essex. The airfield entrance we are using is West of the main entrance to the base.

OS Grid Ref: TL 56678 34418

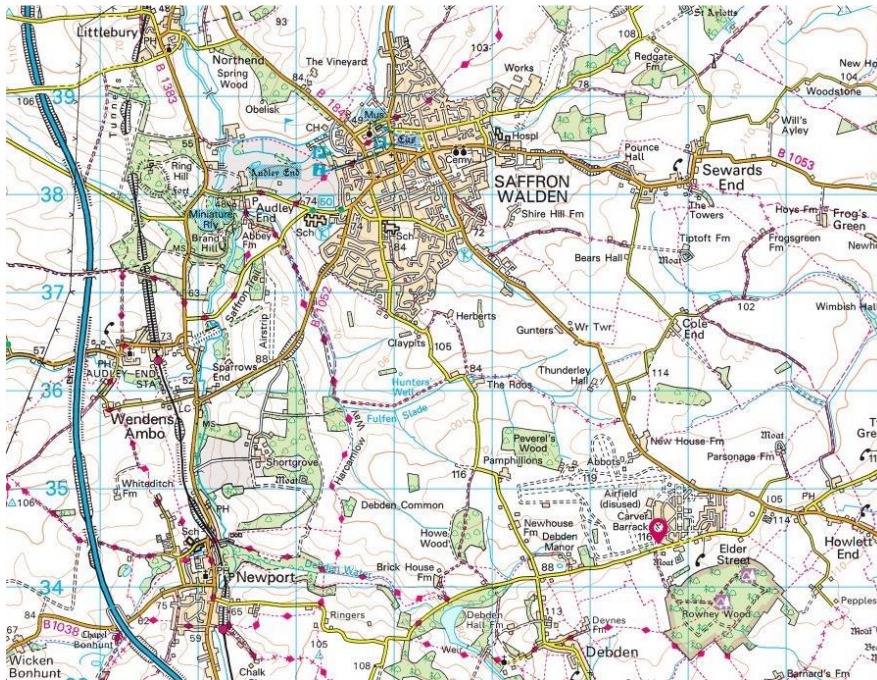
Latitude: 51° 59' 10" N

Longitude: 0° 16' 48" E

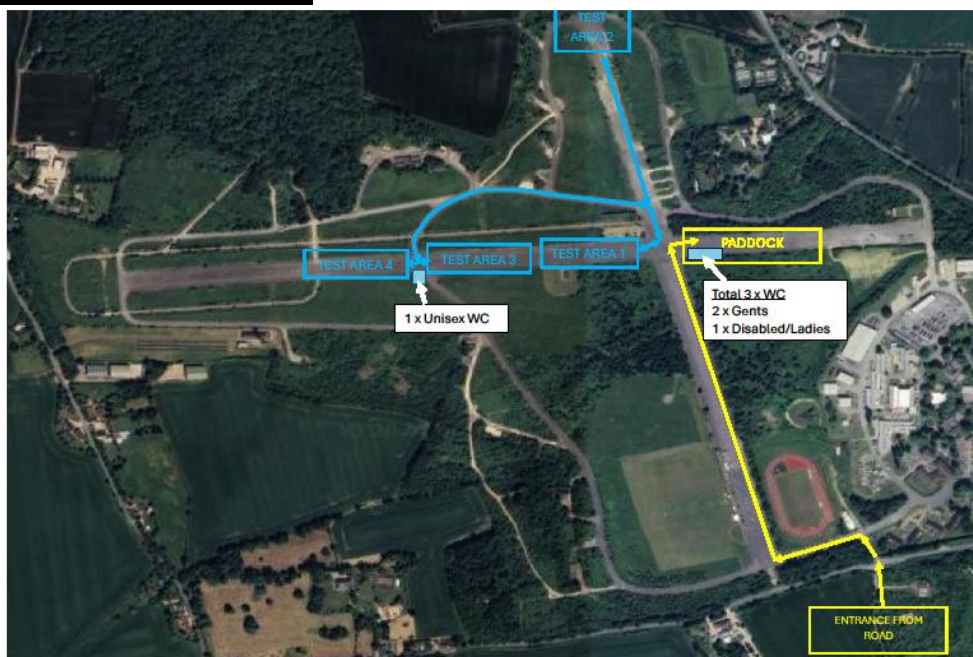
Postcode CB10 2YA

What3Words Lecturers.rate.feast

The speed limit on all of the venue apart from the tests is 20 mph. Those exceeding the speed limit, doing 'doughnuts' or driving inconsiderately, maybe excluded and/or escorted from the site.



## Venue overall site plan



## **Medical**

There will be First Aiders on site. In the event of an incident requiring medical attention call the Event HQ by radio for assistance.

The nearest hospital is Addenbrooke's Hospital, Cambridge, see hospital details later in this manual. Emergency services may be contacted on the 999 telephone number

## **Incident Procedure**

Incidents during the running of a test fall into three categories:-

- Breakdowns and issues not involving injury
  - If the car is within the test, then the local marshals should attempt to safely move it clear of the test, thus allowing the test to continue.
  - if they are unable to easily move the car, then contact the Chief Marshal by radio for further assistance.
- Serious incidents requiring immediate medical attention. The Event HQ, Chief Marshal or CoC should be contacted by radio for further assistance.

If the event requires additional resources, the following RV point has been allocated:

**RV point: Venue entrance**

**Postcode** CB10 2YA

**OS Grid Ref:** TL 56702 34423

**Latitude:** 51° 59' 10" N

**Longitude:** 0° 16' 50" E **What3Words** lecturers.rate.feast

In the event of assistance being required from the emergency services (Fire, Ambulance, Police) an official of the event will be dispatched to the RV point to meet the appropriate services. If the services are required at the scene of the incident the official will escort them to the scene.

Carver Barracks Guard room must be informed if we call in the emergency services.

**Guard Room** Carver Barracks 01223 203617

**Carver Barracks** 01223 203600

### **Air Ambulance Movement and Safety Procedures**

This will be unlikely, but in the event of a casualty evacuation being carried out by air ambulance the following applies:

1. **DO NOT APPROACH** the aircraft unless specifically instructed to do so by a member of the aircraft crew. Keep yourself and ALL other people at least **100 metres** from the aircraft
2. **NEVER ALLOW ANYONE TO APPROACH THE REAR OF THE AIRCRAFT**- the tail rotor which is turning cannot be seen and it kills
3. Loading of the casualty will be carried out by the aircraft crew - if they need any assistance from the Paramedic or marshals they will tell you
4. **AT ALL TIMES THE AIRCRAFT CREW ARE IN CHARGE OF THE SITUATION**

During landing and take-off the aircraft generates considerable wind, so be prepared to secure any loose articles and items of clothing etc.



## Safeguarding

Some persons attending this event may be under 18 or have some vulnerability e.g. for medical reasons. The organisers take the safeguarding of such persons very seriously. If you have any concerns around the treatment of any young and/or vulnerable person please contact the Safeguarding Officer immediately

## Hospital details

The nearest hospital with an Accident and Emergency department is:

**Addenbrooke's Hospital** Hills Rd, Cambridge

**Postcode** CB2 0QQ

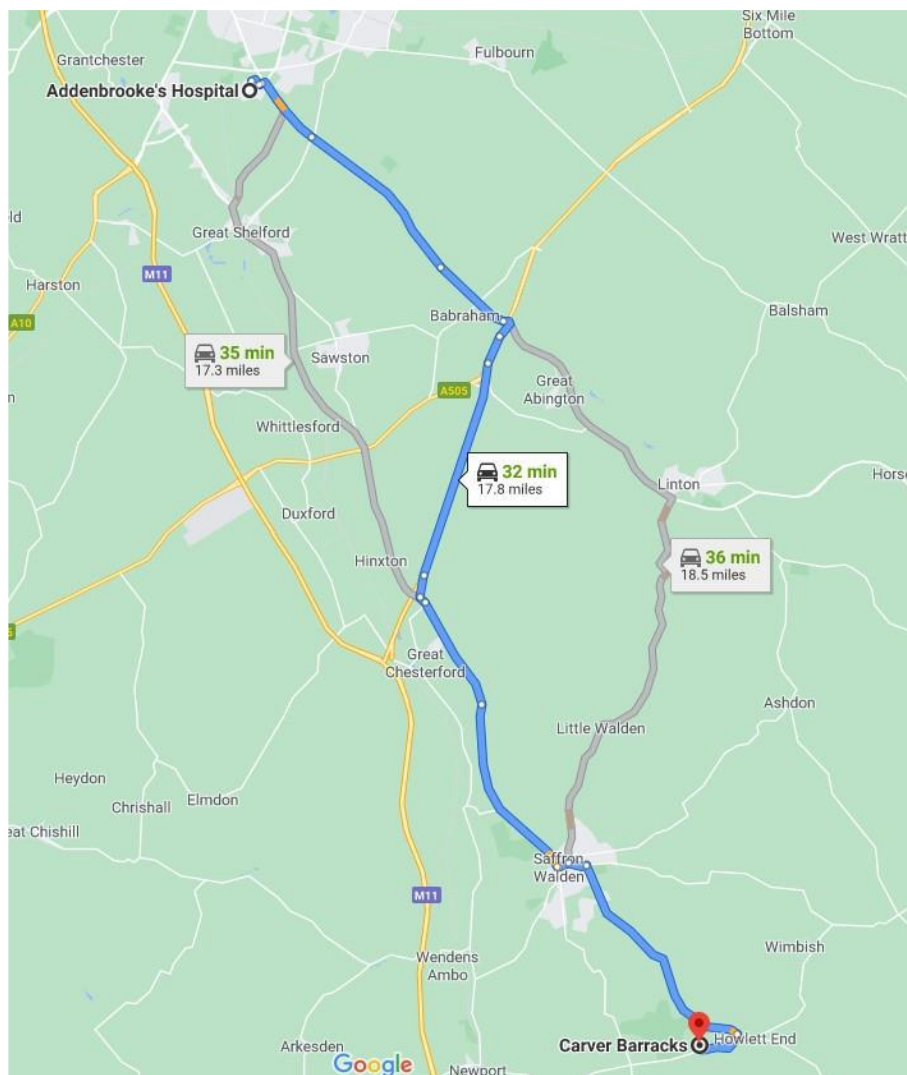
**OS Grid Ref:** TL 46541 55189

**Latitude:** 52° 10' 31" N

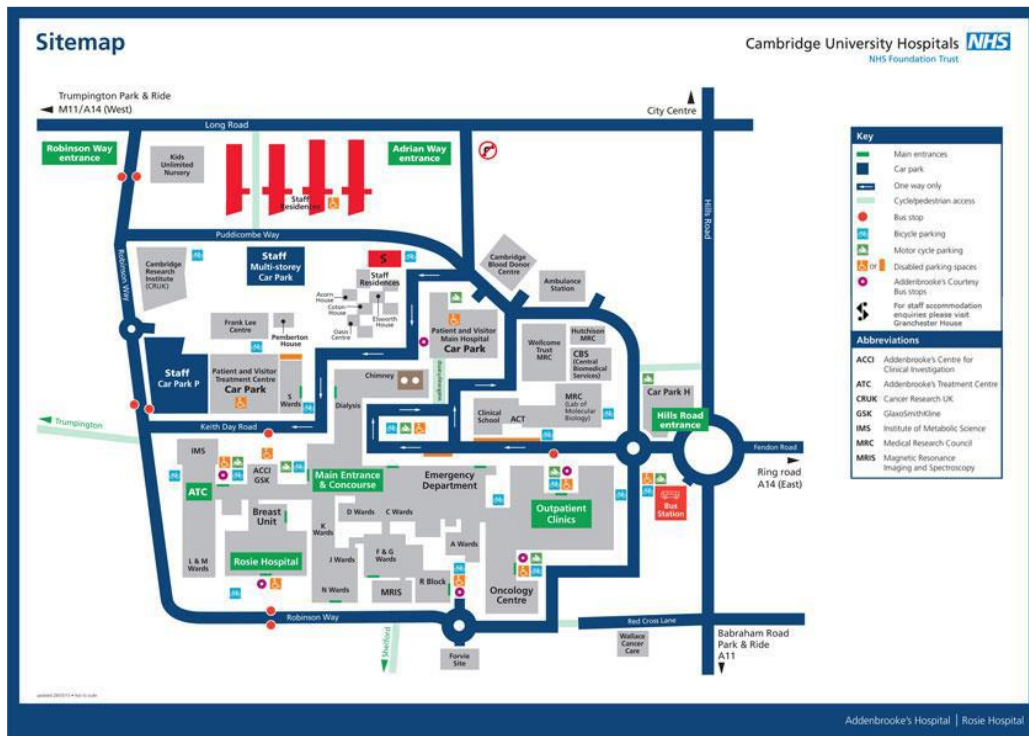
**Longitude:** 0° 8' 29" E

**What3words** fully.chase.swept

### **Hospital location and route**



## Hospital Site Plan



## Risk Assessments

The following have been highlighted as risks which could occur whilst Marshals/Officials are helping on the event.

Hazard	Risks	Evaluation	Precautions & controls in place	Further Action available
Fire	Injury to those in attendance, Slips, trips and falls, Burns, entrapment	Unlikely but with medium to high severity MEDIUM	Fire extinguishers located at Test starts and the Event Office First Aider on site	If incident requires this call 999
Impact	Collision with competing vehicles	Unlikely but with medium to high severity MEDIUM	Speeding on the venue not allowed. First Aider on site	If incident requires this call 999
Slips, Trips and falls	Ground slippery when wet with rain, fuel or oil Possible trip hazard from items left on the ground	Unlikely and with low severity LOW	First Aider on site for more serious cases	If incident requires this call 999